

# From Pipe Dream to Reality: A Case Study of a CWMA



Goose Lake Prairie State Natural Area

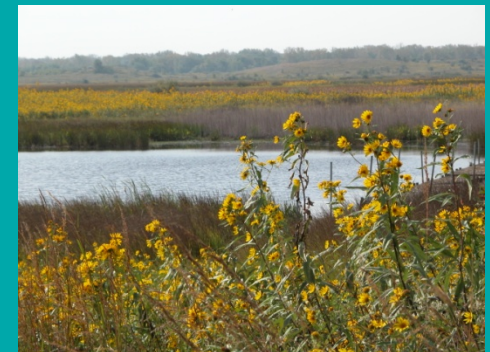
Cathy McGlynn, Coordinator  
Northeast Illinois Invasive Plant Partnership

*How we got started ....*  
*It did not happen overnight*

**2003** – Local partners received funding from Chicago Wilderness (CW) to develop and implement a regional Early Detection and Rapid Response Program [New Invaders Watch Program (NIWP)] and to establish a pilot Cooperative Weed Management Area in Lake and McHenry Counties.

**2008** – Chicago Wilderness Natural Resource Management Team expresses interest in establishing a CWMA in the Chicago region. In partnership with the Midwest Invasive Plant Network, local partners and CW host a workshop for over 65 organizations and agencies in the Chicago area to learn about CWMA's and discuss the merit of forming a regional CWMA in the Chicago Region.

Goose Lake Prairie State Natural Area, Grundy County, IL



## *The saga continues . . .*

**2008/2009** – An ad hoc committee is formed to develop a model of how a CWMA in the Chicago region might be organized. Partners develop a long term work plan for the CWMA based on partner needs expressed in the workshop.

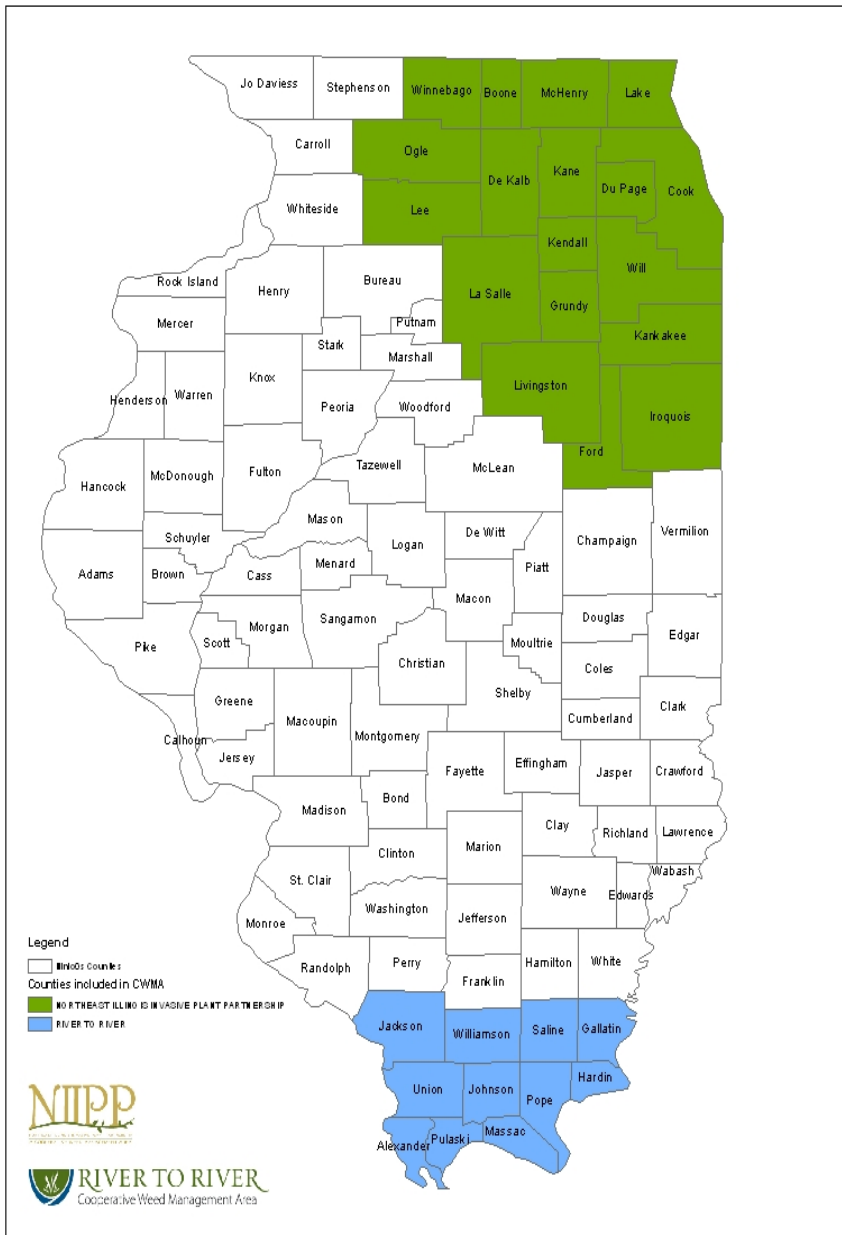
**2010** – Chicago Wilderness receives \$96,000 of Great Lakes Restoration Initiative Funds from the US Forest Service to start up a CWMA in northeast Illinois, which includes the Lake Michigan watershed. Partners hire a regional Invasive Plant Management Coordinator and “NIIPP” is born.



Lake in the Hills Prairie, McHenry County, IL

# Area covered by NIIPP

- 18 counties in northeast Illinois
- Also work with River to River CWMA, Southeast Wisconsin Invasive Species Consortium and Indiana Coastal CWMA



Implementing the Forest Campaign Plan Using Cooperative Weed Management Areas

CWMA Geographic Coverage



# What we started with



- Full-time coordinator
- List of contacts from invasive plant workshop
- Successful pre-proposal for Pulling Together Initiative
- Ten Year Long-Term Work Plan
- 14 months of funding
- List of GLRI grant deliverables and match



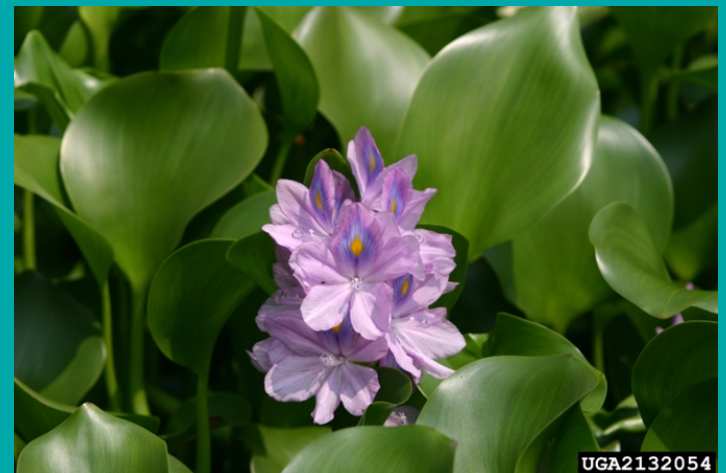
# Goals

- Establishment
- Education and Outreach
- Early Detection and Rapid Response
- Coordinating Control and Management
- Research on Invasive Plant Biology and Control



# Establishment

- Choose area CWMA will cover
- Draft Memorandum of Understanding
- Meet with potential partners
- Set up “government”
- Focus on organizational development
- Determine your mission
- Don’ t re-invent the wheel!



# Draft Memorandum of Understanding

- Know your partners
- Use templates available
- Produce draft early on and ask SC to review (repeatedly)
- Once okayed by SC send off for partner review





# Meet with Potential Partners



- Need a firm foundation of relationships across boundaries (transportation, utilities, etc.)
- Listen to their needs- they will provide direction

# Setup Government

- 6 member steering committee
- 3 member executive committee (chair and two co-chairs)
- Term: voluntary, two years



# Determine Mission



- Invasive species or invasive plants?
- Terrestrial or aquatic habitats?
- Focus on control? Education and outreach? Early detection and rapid response?

# Organizational Development



- MOU and signatures
- Annual Operating Plan
- Annual Report and Meeting
- Website
- Logo
- PR
- Be open to opportunity!

# Don't Reinvent the Wheel!

- Documents
- Website design
- Link to other websites and pages



# Goals

- Establishment
- Education and Outreach
- Early Detection and Rapid Response
- Coordinating Control and Management
- Research on Invasive Plant Biology and Control



# Education and Outreach

- Green Industry Education and Outreach
- Clean Boats Crew
- Illinois Hydrilla Task Force
- New and Common Invader Training
- Supporting legislation



# Green Industry Education and Outreach

- Collaboration with Midwest Invasive Plant Network, Chicago Botanic Garden, The Nature Conservancy
- Survey, Smartphone app, Video
- Funding: Donnelley Foundation





# Clean Boats Crew: Aquatic Invasive Species



- Collaboration with IL-IN Sea Grant

- Multiple counties in Illinois and Indiana

2011: 874 exposures

2012: 2,546 exposures

Funding: Great Lakes Restoration Initiative

# New & Common Invaders Training

- Provide identification skills for invasive plants
- Information about access for monitoring and reporting
- New Invaders Watch Program ([www.newinvaders.org](http://www.newinvaders.org))
- Recent funding: GLRI and IL Wildlife Preservation Fund



UGA2308104



Jody Shimp IDNR

# Illinois *Hydrilla* Task Force



- Statewide program with test run in NE Illinois
- Creation and distribution of
  - Hydrilla ID sheet for volunteer monitors
  - Hydrilla Hunt card for the general public
  - Hydrilla poster to raise awareness
  - Dedicated Web subdirectory
- Collaboration: Public, nonprofit, and private sector
- Funding: GLRI (through IL DNR)

# Supporting Legislation

- Amendment to Boat Registration and Safety Act (HB3888)
- Phasing out and state regulation of invasive ornament plants



# Goals

- Establishment
- Education and Outreach
- **Early Detection and Rapid Response**
- Coordinating Control and Management
- Research on Invasive Plant Biology and Control



# Early Detection and Rapid Response

New Invaders Watch Program - EDDMapS - Invasive Species Mapping Made Easy - Windows Internet Explorer

http://www.newinvaders.org/index.cfm

File Edit View Favorites Tools Help

Google Search Share More >>

Catherine McGlynn

New Invaders Watch Program - EDDMapS - Invasive ...

## New Invaders Watch Program

### Early Detection and Rapid Response Network

Username:  Login

Password:

[Become a Volunteer](#) [Lost your password?](#)

- Home
- About
- Partners
- Report an Invader
- Target Species
- Maps
- Trainings & Activities
- Training Materials
- Additional Resources

#### New Invaders Watch Program (NIWP)

is an early detection and rapid response network of volunteer, government, non-profit, and business organizations dedicated to identifying, mapping and controlling new exotic invasive species. Our current focus area is within Northeast Illinois and Northwest Indiana.



Our target species are known to be invasive in the Midwest or regions of similar climate, and are not known from Northeast Illinois. Or have yet to spread into their preferred habitats in the region.

NIWP help meet the early detection and rapid response initiatives of the Northeast Illinois Invasive Plant Partnership and the Indiana Coastal Cooperative Weed Management Area.

#### Alerts and New Reports

Recent Reports

#### Target Species



Japanese Knotweed  
Photo by: D. Maurer

#### Become a Volunteer

You can help by providing new sightings to the system. [Click here to register.](#)

#### Go To Target Species Maps

Internet 100%

start 2 Internet ... Windows Me... Microsoft ... NIIPP Annual... ZoomBrowser... ILMS 2012 12:43 PM

# New Invaders Watch Program

- Regional Early Detection/Rapid Response Program
- Now linked to EDDMapS
- Will dictate assignments for Strike Team

The screenshot shows the homepage of the New Invaders Watch Program. The header includes the program name and a navigation menu with links for Home, About, Partners, Report an Invader, Target Species, Maps, Trainings & Activities, Training Materials, and Additional Resources. A main content area features a large image of a person in a field, a 'Target Species' section with a photo of a plant, and a 'Become a Volunteer' section. A 'Alerts and New Reports' section lists recent sightings of leafy spurge, narrow-leaf bitterweed, and Chinese silvergrass. A 'Go To Target Species Maps' section includes a map of Illinois.

The screenshot shows the EDDMapS interface for the species *Heracleum mantegazzianum* (giant hogweed). The page displays a map of Illinois with several red location markers. The map includes a legend for 'Multiple EDDMapS Points', 'Single EDDMapS Point', and 'Single New Invaders Point'. The species name and scientific classification are shown at the top, along with a 'Load Time' indicator and download options for Print, Excel, and KMZ. The map also features a scale bar and a 'Map Satellite' button.

# Illinois *Hydrilla* Task Force: EDRR



- Education and Outreach assists with Early Detection
- Convene Rapid Response Team (MOD)
- Obtain any needed permits or permissions
- Increase capacity to respond to invasion (financially and legally)
- Collaboration: Public, nonprofit, and private sector
- Funding: GLRI (through IL DNR)



# Goals

- Establishment
- Education and Outreach
- Early Detection and Rapid Response
- **Coordinating Control and Management**
- Research on Invasive Plant Biology and Control



# Coordinating Control and Management

Working with partners from diverse fields:

- Union Pacific RR and McHenry County CD
- ComEd and Morton Arboretum and Cook County FPD
- IDOT District 1 and Park District of Highland Park and other partners
- Illinois Tollway and NIIPP partners
- Downers Grove FPD, DuPage County FPD, IDNR Chicago Interns
- IDOT Districts 2 and 3 now on board!!



# Small Grants



Flowering Rush control site (DuPage County, IL)

- Invasive plants treated throughout 731 acres
- **Species** – flowering rush, Callery pear, Asian bittersweet, brown knapweed, Amur cork tree, Giant hogweed, buckthorn, Amur honeysuckle
- **Habitats**- Wetlands, Woodlands, ROWs

# Goals

- Establishment
- Education and Outreach
- Early Detection and Rapid Response
- Coordinating Control and Management
- Research on Invasive Plant Biology and Control



# Research on Invasive Plant Biology / Control

- Wild Chervil Control Research Group
- Blue Globe Thistle Research
- Providing connections for *Phragmites* Adaptive Management Research



# Funding



- Get your name out there
- Deliver those grant deliverables!
- Find your strengths
- Be open to opportunity
- Keep track of successes and accomplishments and post them!

# Funding

IDEAL: One large continuous grant to cover salary/benefits, travel, and programmatic expenses for a long, long time!

REALITY: Multiple smaller grants pieced together often on an annual basis



# Our current funding

Coordinator salary and benefits funded through early 2014 by-

- USDA-FS Great Lakes Restoration Initiative
- Illinois Department of Natural Resources
- Illinois-Indiana Sea Grant
- Donnelley Foundation





# Summary

Will need:

- Key partners with a vision
- Mission and work plan
- Communication
- Flexibility
- Persistence
- Regional presence
- Funding
- Plan to keep organization sustainable

# Thank you!

Cathy McGlynn  
[cathy.mcglynn@niipp.net](mailto:cathy.mcglynn@niipp.net)  
847-242-6423  
[www.niipp.net](http://www.niipp.net)

